

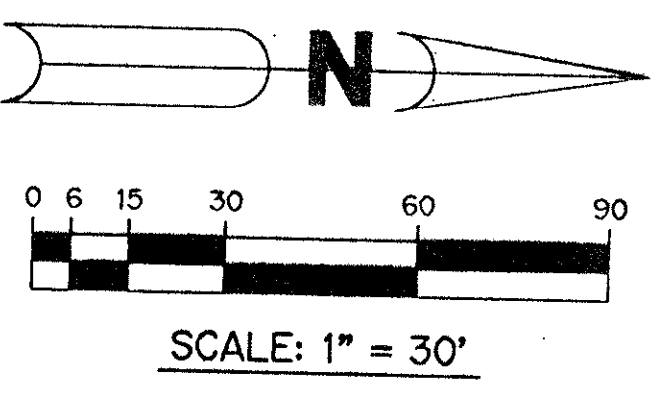
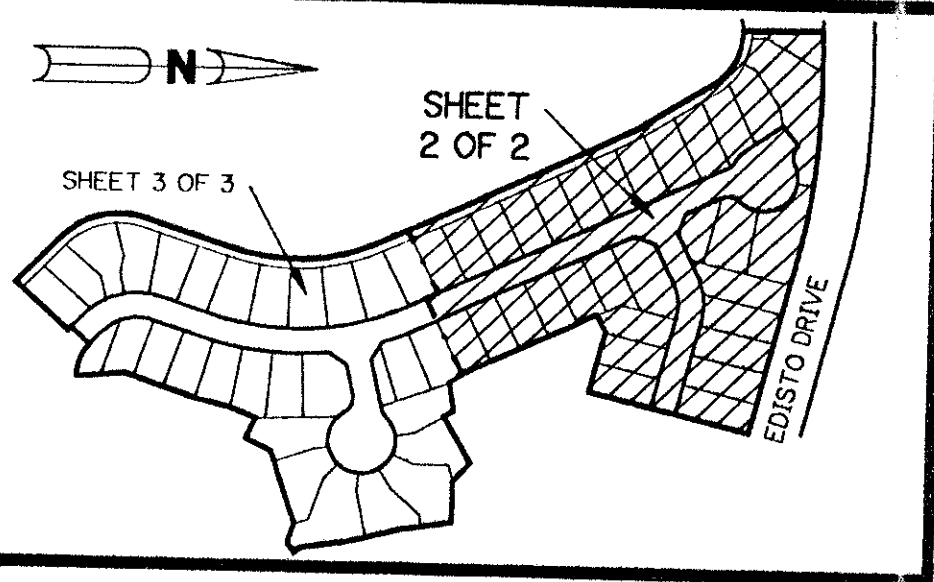
LAKE CHARLESTON - TRACT "I" - PLAT THREE

A PART OF LAKE CHARLESTON PLANNED UNIT DEVELOPMENT

BEING A REPLAT OF A PORTION OF TRACT "I" ACCORDING TO THE
 PLAT OF LAKE CHARLESTON PLAT NO. 3 - P.U.D. AS RECORDED IN PLAT BOOK 62,
 PAGES 55 THROUGH 68 INCLUSIVE, OF THE PUBLIC RECORDS OF PALM BEACH COUNTY, FLORIDA.
 SECTION 9, TOWNSHIP 45 SOUTH, RANGE 42 EAST

SHEET 2 OF 3 MAY, 1992

LAKE CHARLESTON PLAT NO. 3 - TRACT "H" P.B. 62, PGS. 55-68



KEY MAP N.T.S.

ACCEPTANCE OF RESERVATION

STATE OF FLORIDA
 COUNTY OF PALM BEACH
 THE LAKE CHARLESTON MAINTENANCE ASSOCIATION, INC. HEREBY ACCEPTS THE DEDICATIONS OR RESERVATIONS TO SAID ASSOCIATION AS STATED AND SHOWN HEREON, AND HEREBY ACCEPTS ITS MAINTENANCE OBLIGATIONS FOR SAME AS STATED HEREON, DATED THIS 7th DAY OF June A.D., 1993.

LAKE CHARLESTON MAINTENANCE ASSOCIATION, INC., A FLORIDA CORPORATION NOT FOR PROFIT

ATTEST: *Michael J. Belmont* BY: *Doyle D. Dudley*
 MICHAEL J. BELMONT DOYLE D. DUDLEY,
 SECRETARY/TREASURER PRESIDENT

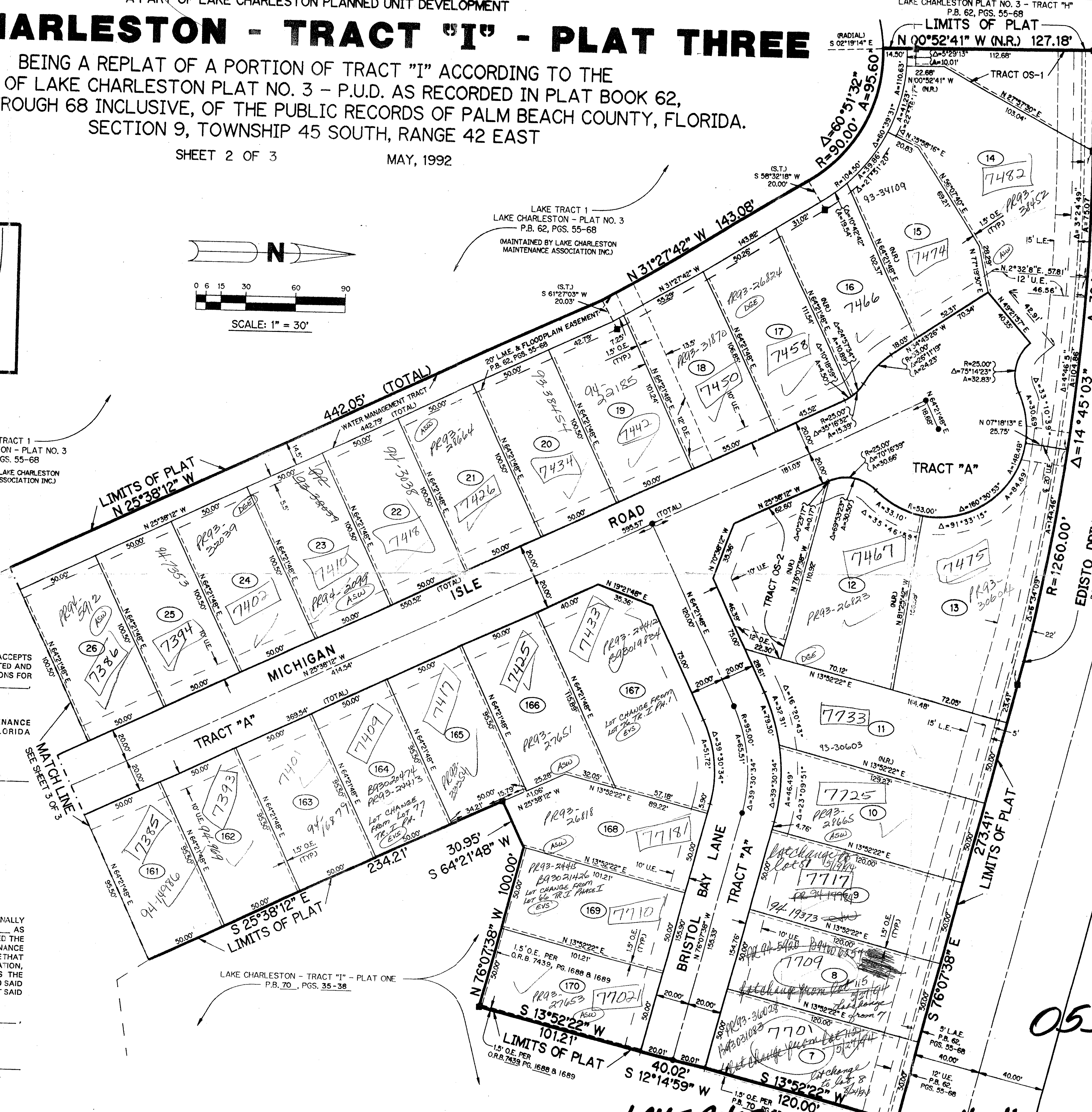
ACKNOWLEDGEMENT:

STATE OF FLORIDA
 COUNTY OF PALM BEACH
 BEFORE ME, PERSONALLY APPEARED DOYLE D. DUDLEY WHO IS PERSONALLY KNOWN TO ME, OR HAS PRODUCED DRIVERS LICENSE AS IDENTIFICATION AND DID/DID NOT TAKE AN OATH, AND WHO EXECUTED THE FOREGOING INSTRUMENT AS PRESIDENT OF LAKE CHARLESTON MAINTENANCE ASSOCIATION, INC., AND SEVERALLY ACKNOWLEDGED TO AND BEFORE ME THAT HE EXECUTED SUCH INSTRUMENT AS SUCH OFFICER OF SAID CORPORATION, AND THAT THE SEAL AFFIXED TO THE FOREGOING INSTRUMENT IS THE CORPORATE SEAL OF SAID CORPORATION AND THAT IT WAS AFFIXED TO SAID INSTRUMENT BY DUE AND REGULAR CORPORATE AUTHORITY, AND THAT SAID INSTRUMENT IS THE FREE ACT AND DEED OF SAID CORPORATION.

WITNESS MY HAND AND OFFICIAL SEAL THIS 7th DAY OF June A.D., 1993.

Jan. 27, 1996
 MY COMMISSION EXPIRES
 CHERIE A. WICHELINS
 NOTARY PUBLIC STATE OF FLORIDA
 CHAIRMAN IN CHARGE
 COMMISSION NO. CC174247
 MY COMMISSION EXP. JAN. 27, 1996

Cherie A. Wichelins
 NOTARY PUBLIC STATE OF FLORIDA
 CHERIE A. WICHELINS



PET. 86-96A
 ALLOC. # 0009
 W/ASSIGNMENT
 LETTER 5/2/92

0533-017
 7/1/69

LAKE CHARLESTON - TRACT "I" - PLAT 3